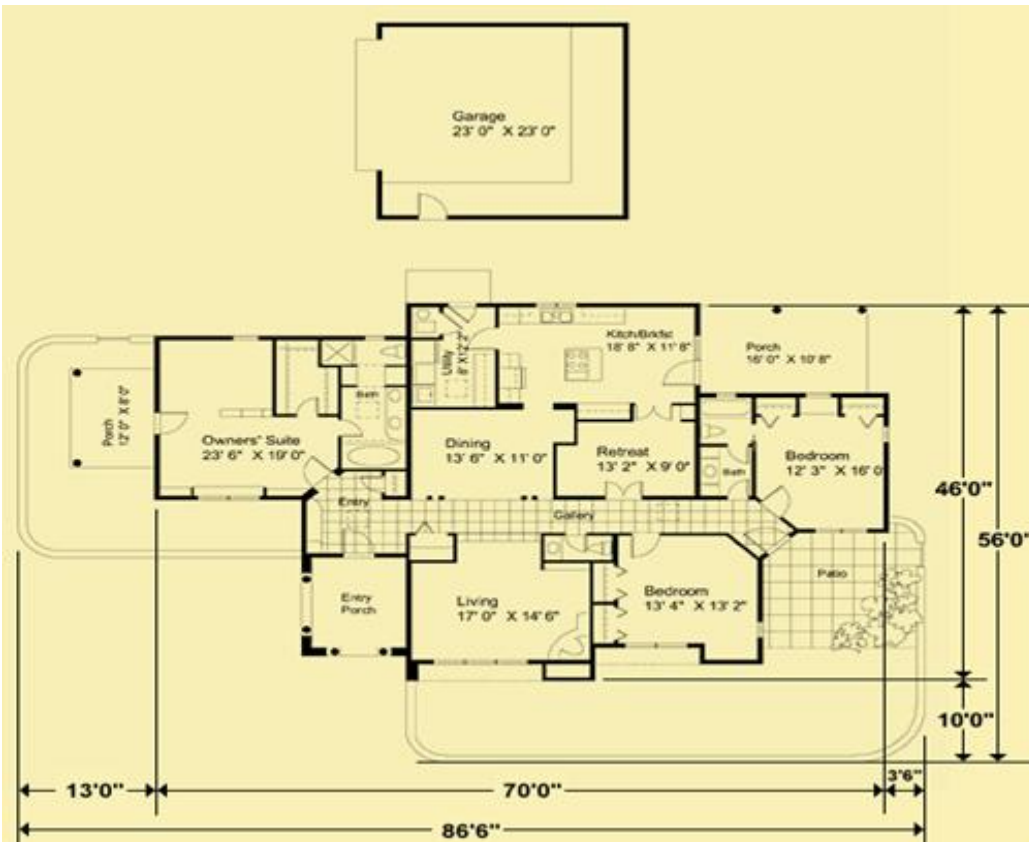




MAIN FLOOR PLAN



**HOUSE PLAN
MP 3-403**

**Medium Price Housing
Standard Features:**

Dimensions:

Width: 70 ft. 21.19 Meters.
Depth: 46 Ft. 13.92 Meters
Ridge Height: 12 Ft., 3.63 Mtrs
Total Floor Space: 3,220 Sq. Ft., 299.15 Sq. Meters.

Exterior Wall Thickness:

6 inches, Interior, 4 Inches
Ceiling Height: 8 feet, 3.02 meters. **Roof Pitch:** 10:12

Detached Garage: 2 Carports
 529 Sq. Feet 49.77 Sq. Meters

Basement: None

Floor Levels: 1

- 3 Bedrooms, 2.5 Baths
- Anodized double glazed custom windows

Remarks:

With 200 square feet of south-facing glass. Sunny house. The home, designed for the southwest and in warm climates, with prefabricated roof truss. In hot weather, porches and overhangs provide shading from the sun. Lots of operable windows allow natural-cooling and ventilation. Spacious bedrooms. A unique home designed for comfortable living

Cost To Build:

Does not include foundation, on site construction, floor covering shipping, infrastructure, cost of land, and landscaping.

FOB Factory

**\$58,780
2 Car Garage**

Price effective November 2008.

ELEVATION

