



**MAIN FLOOR PLAN**



**HOUSE PLAN  
MP 87-1**

**Medium Price Housing  
Standard Features:**

**Dimensions:**

**Width:** 58 ft. 17.68 Meters.  
**Depth:** 40 Ft. 12.10 Meters  
**Ridge Height:** 18 Ft., 5.45 Mtrs  
**Total Floor Space:** 2,320 Sq. Ft., 215.53 Sq. Meters.

**Exterior Wall Thickness:**

6 inches, Interior, 4 Inches  
**Ceiling Height:** 8 feet, 3.02 meters. **Roof Pitch:** 0

**Garage:** 2 Carports

415 Sq. Feet 37.39 Sq. Meters

**Basement**

Option Partial Basement, Get 1,000 Sq. Ft. additional interior living space.

**Floor Levels:** 2

- 4 Bedrooms, 2.5 Baths
- Anodized double glazed custom windows

**Remarks:**

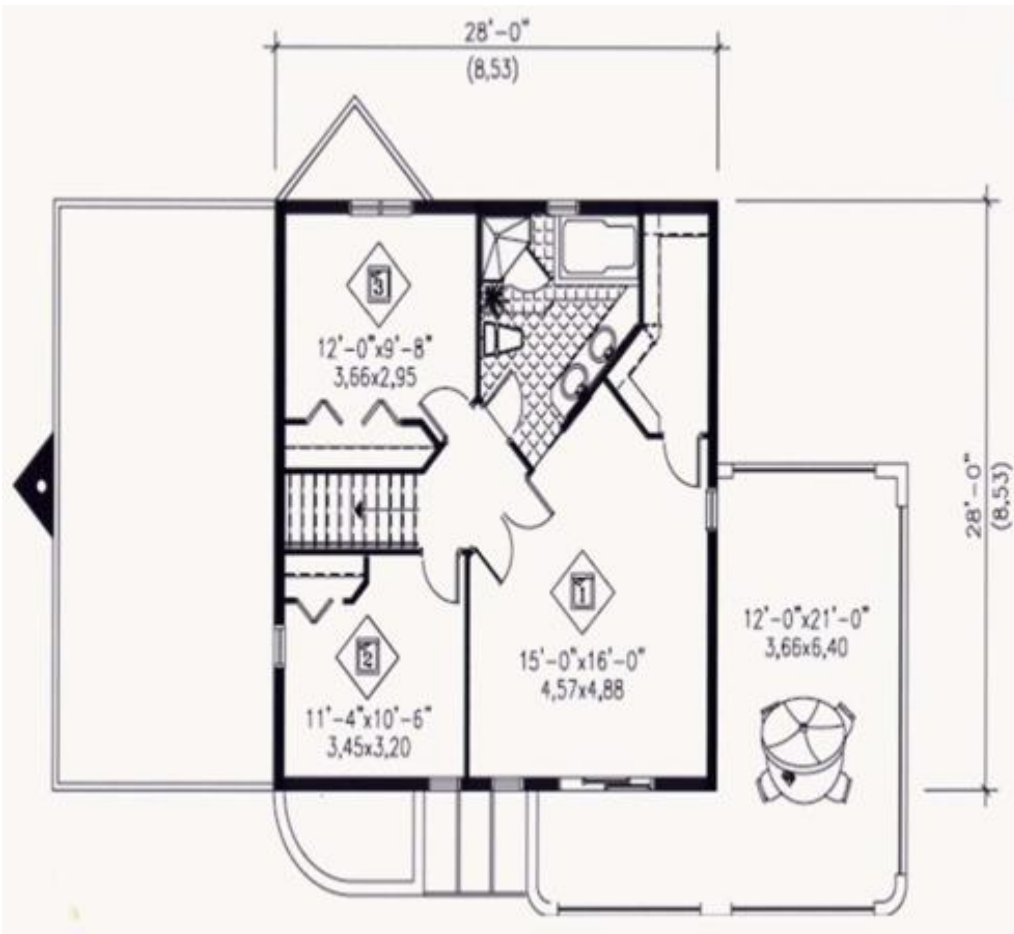
This unique modern design is very popular in any country. The house plan of 2,320 square feet, 3 bedroom, 2 bath with a 2 car garage, has a very unique floor plan, with a breakfast nook, sitting room. This unique design is flexible, and we have also redesigned the plan to increase the size of the house to up to 3,500 square feet, with 5 bedrooms and 4 bathrooms.

FOB Factory

**\$46,900  
2 Car Garage**

*Price effective  
September 15, 2009*

## 2<sup>ND</sup> STORY PLAN

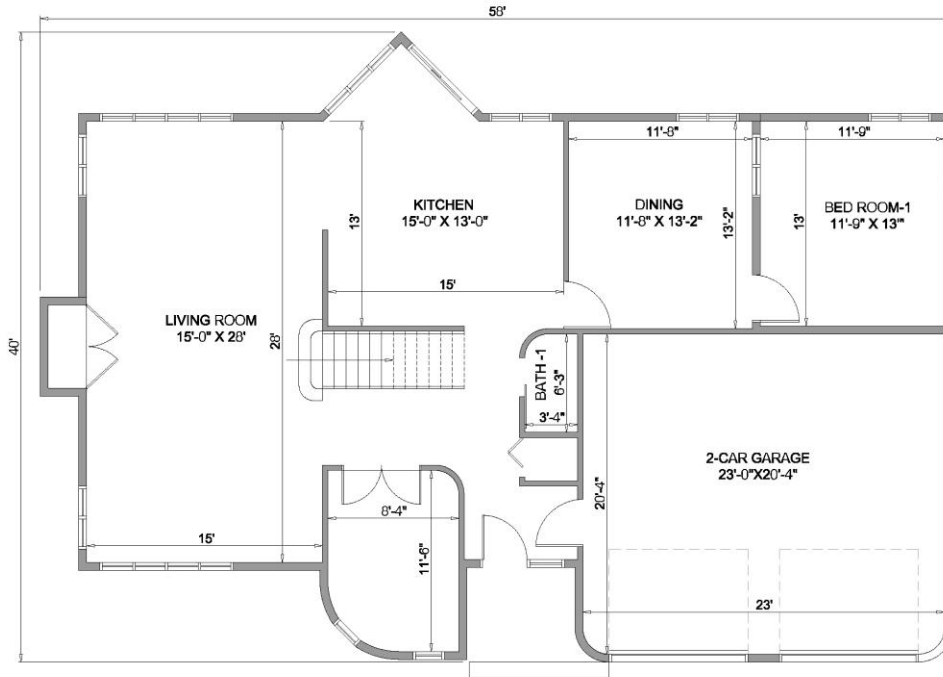


### Cost To Build:

Does not include foundation, on site construction, floor covering, shipping, infrastructure, cost of land, and landscaping. 2,825 square feet.

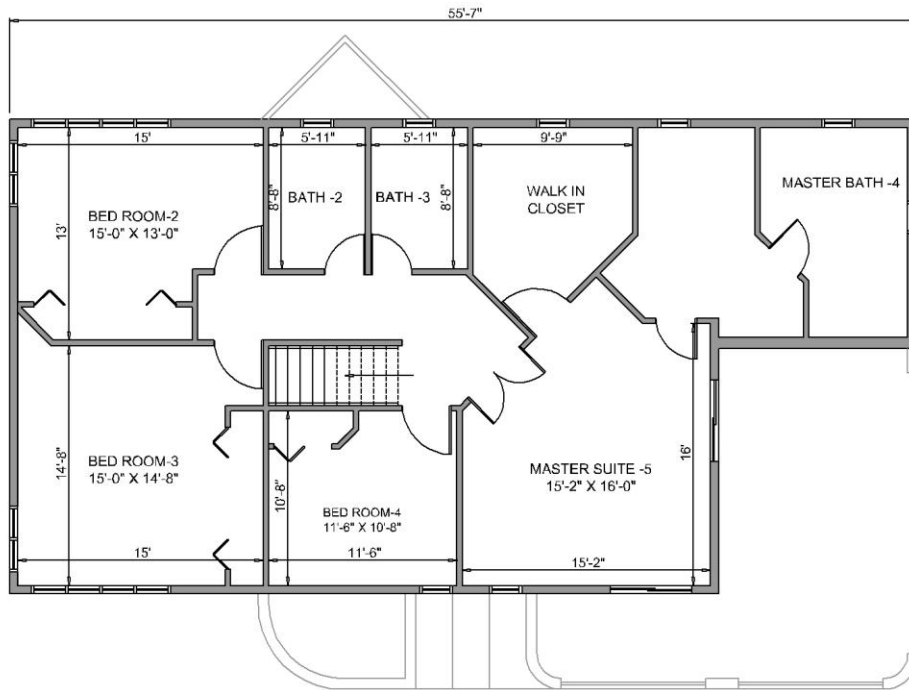
*Price for 4 bedroom, 3 bath two car garage, 3,500 sq. feet*

**\$56,200**



### GROUND FLOOR PLAN

BUILT UP AREA - 1663.12 SQFT



### FIRST FLOOR PLAN

BUILT UP AREA - 1262.63 SQFT

