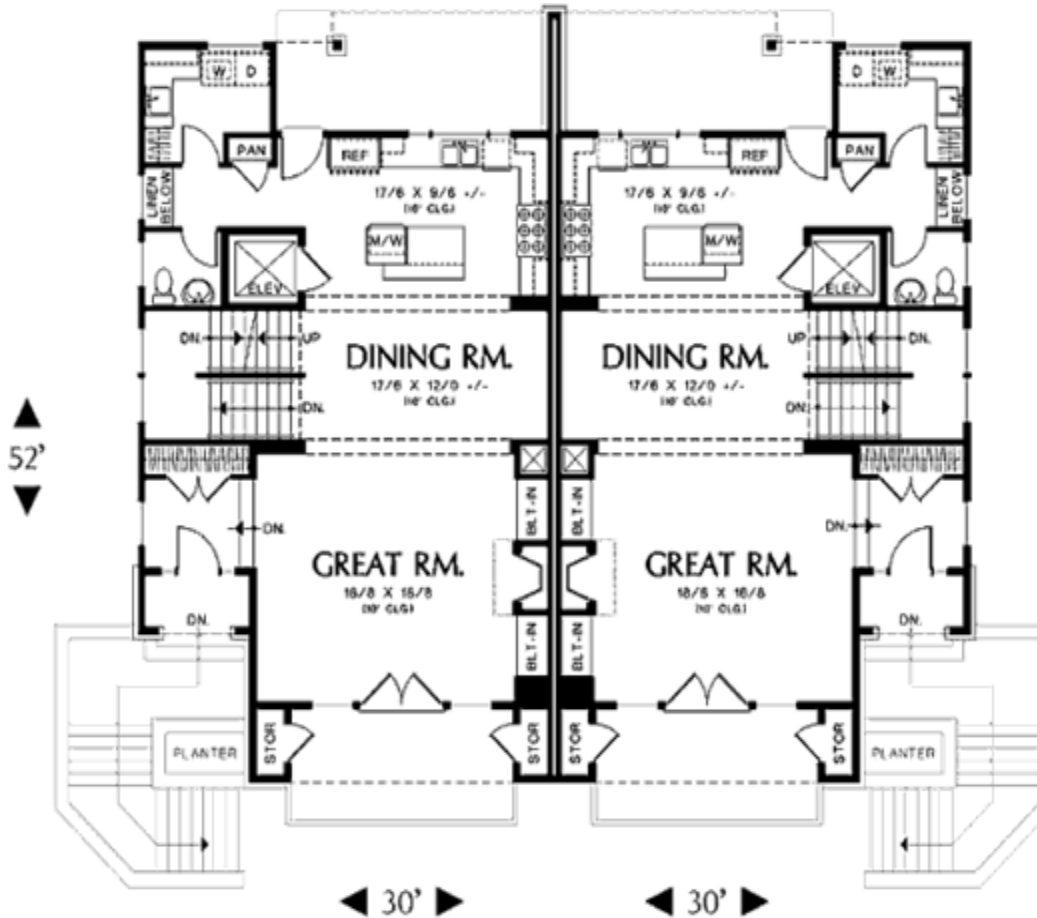




**MAIN FLOOR LEVEL UNIT**



**HOUSE PLAN  
MP 48-261  
DUPLEX**

**Medium Price Housing**

**Standard Features:**

**Dimensions:**

**Width:** 60 ft. 18.16 Meters.

**Depth:** 52 Ft. 15.70 Meters

**Ridge Height:** 33 Ft., 10.0 Mtrs

**Total Floor Space:**

2,861 Sq. Ft., 258.32 Sq. Mtrs

**Main Floor:** 1,158.32 Sq. Ft.

104.56 Sq. Meters.

**Upper Level:** 1,212 Sq. Ft.

109.43 Sq. Meters.

**Lower Floor:** 491 Sq. Ft.

44.33 Sq. Meters.

**Exterior Wall Thickness:**

6 inches, Interior, 4 Inches

**Ceiling Height:** 8 feet, 2.42

meters. **Roof Pitch:** 0

**Garage:** 2 Carports Per Unit

4 Carports in a 2 Unit Duplex

**Basement:** None

Floor Levels: 3

- 3 Bedrooms, 2.5 Baths

- Anodized double glazed custom windows

**Remarks:**

This is a 2 unit duplex, each duplex features 2,861 square feet (258.32 square meters) of contemporary style 3 bedrooms, 2.5 baths with 2 car garage. The floor plan features walk-in-closets, great room/living room, upstairs master bedroom, covered porch,, media room, breakfast nooks

**Cost To Build:**

Does not include foundation, on site construction, floor covering, shipping, infrastructure, cost of land, and landscaping.

FOB Factory

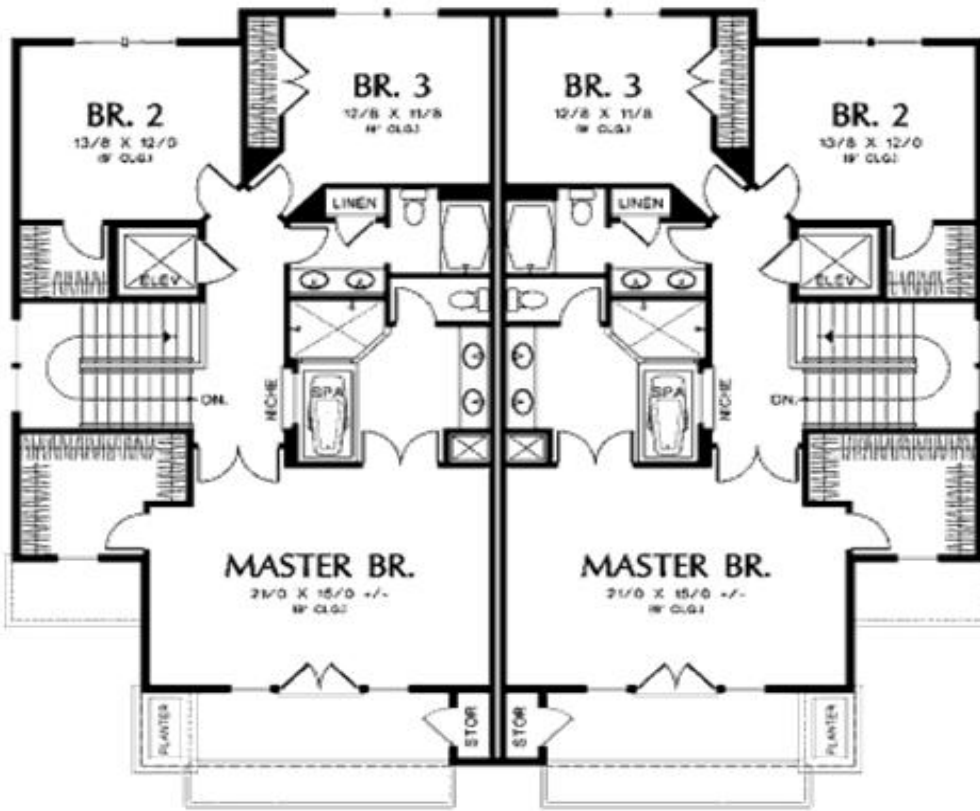
**\$57,220**

**PER UNIT**

*Price Effective*

*September 15, 2009*

## UPPER LEVEL UNIT



## LOWER LEVEL GARAGE AND STORAGE

