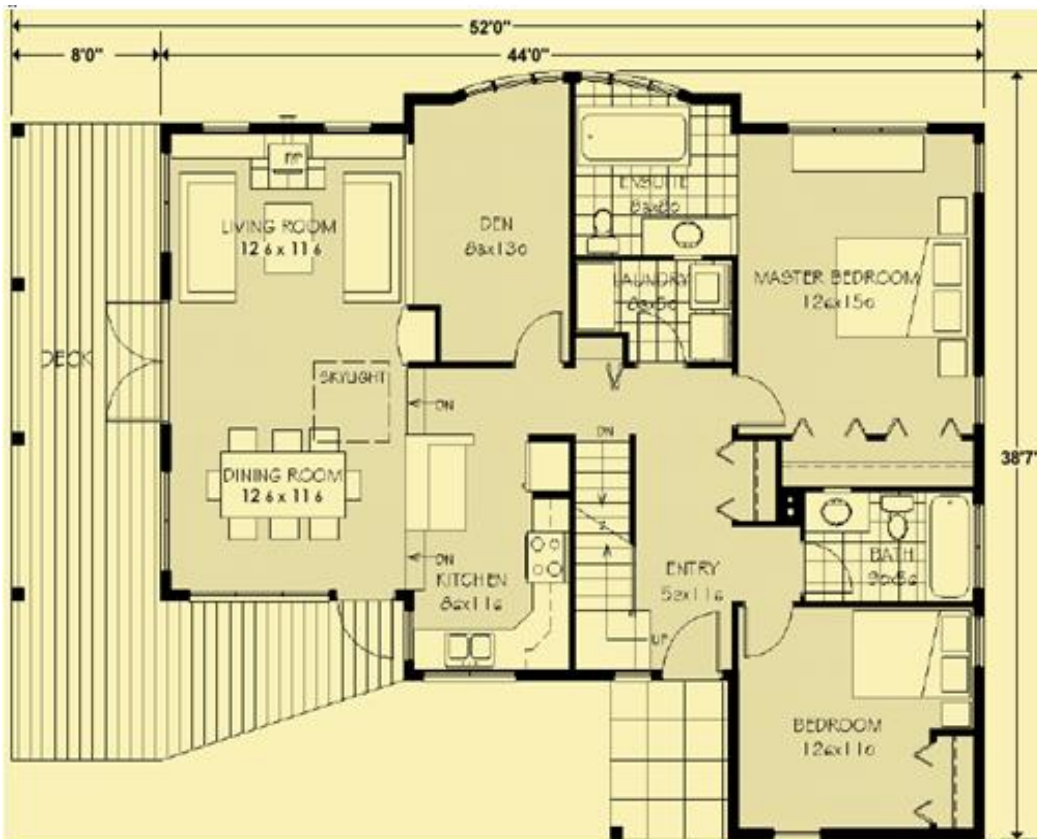




## MAIN LEVEL



## HOUSE PLAN LX 3-393

### Luxury Home Plan Standard Features:

#### Dimensions:

**Width:** 85 ft. 25.73 Meters.

**Depth:** 55 Ft. 16.65 Meters

**Ridge Height:** 32 Ft., 9.67 Mtrs

**Total Floor Space:** 4,450 Sq. Ft., 401.80 Sq. Meters.

#### Main Floor:

2,482 Sq. Ft. 224.0 Sq. Mtrs.

#### Upper Floor:

1,968 Sq. Ft. 177.69 Sq. Mtrs.

#### Exterior Wall Thickness:

6 inches, Interior, 4 Inches

#### Ceiling Height:

10 feet

#### Roof Pitch:

**Garage:** 3 Carports

**Basement:** None

Floor Levels: 2

- 5 Bedrooms, 4 Baths
- Anodized double glazed custom windows

#### Cost To Build:

Includes foundation, on site construction. Does not include final floor covering, kitchen cabinets, shipping, infrastructure, cost of land, landscaping

FOB Factory

**\$426,500**  
**3 Car Garage**  
Price Effective  
September 15, 2009

## UPPER LEVEL



## SIDE ELEVATION VIEW



## HOUSE PLAN 3-393

### Luxury Home Plan Standard Features

#### Remarks:

This 4,450 French country home gives it an old world charm, with its wooden plain shutters, stone veneer and arched windows. The first floor features a beautifully arranged and well thought out open plan around a dramatic centrally located guest room, and the upper media room and optional bonus room. The covered entry porch leads to an entrance hall, with the great room straight ahead. The great room has a glazed door and windows, that look out to the open terrace at the rear. More windows above reach the two story high ceiling, bringing in additional sunlight and views. An impressive fireplace on one wall is flanked by built ins on either side. The great room is open to a spacious kitchen with a large sunny breakfast nook. The second or upper level is equally spectacular

**\$426,500**  
**3 Car Garage**

*Price effective  
September 15, 2009*

