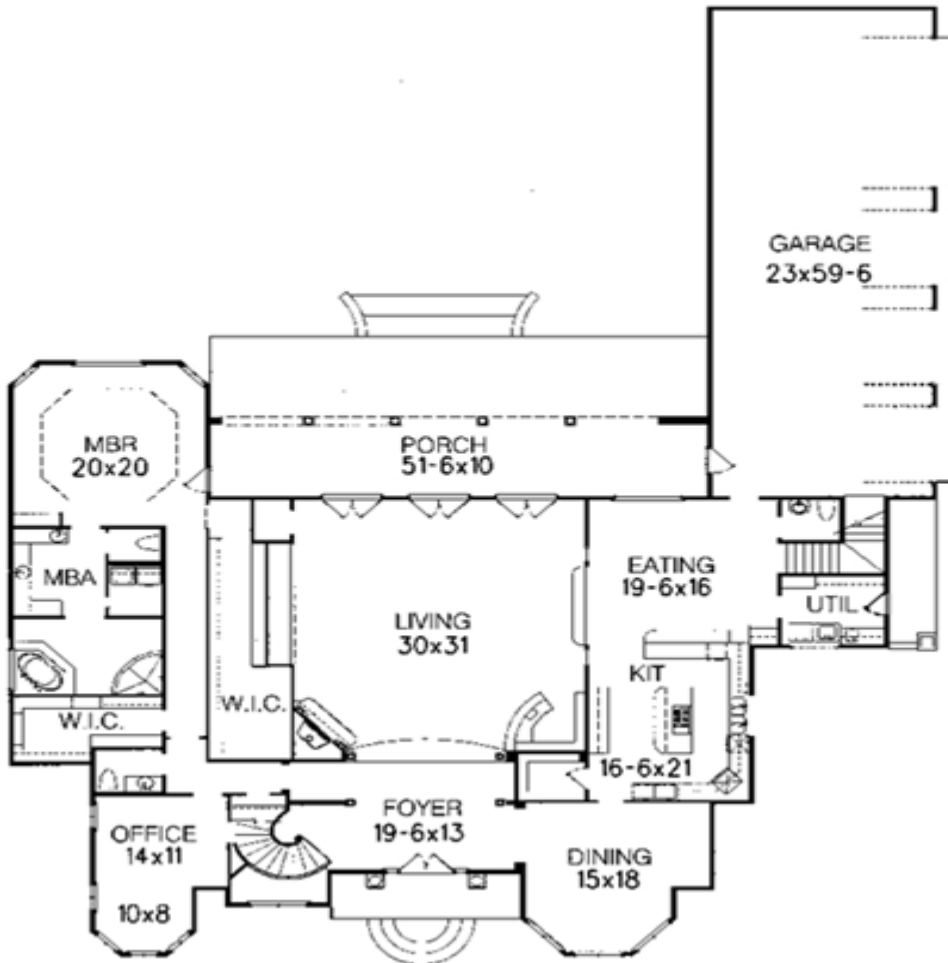




MAIN LEVEL



**HOUSE PLAN
LX 15-240**

**Luxury House Plan
Standard Features:**

- Dimensions:**
Width: 90 ft. 27.24 Meters.
Depth: 124 Ft. 37.53 Meters
Ridge Height: 36 Ft., 10.9 Mtrs
Total Floor Space: 6,209 Sq. Ft., 564.40 Sq. Meters.
Main Floor:
 4,273 Sq. Ft. 385.81 Sq. Mts.
Upper Floor:
 1,936 Sq. Ft. 174.80 Sq. Mtrs.
Exterior Wall Thickness:
 6 inches, Interior, 4 Inches
Ceiling Height: 10 feet,
Roof Pitch: 7:12
Garage: 5 Carports
 1,448 Sq. Ft. 130.74 Sq. Mtrs.
Bonus Room-Option:
 1,626 Sq. Ft. 146.81 Sq. Mtrs.
Basement: None
 Floor Levels: 2
- 5 Bedrooms, 4 Baths
 - Anodized double glazed custom windows

Remarks:
 This 6,209 square feet Mediterranean style, 5 bedroom 4 bath with 5 car garage, features a floor plan that is open with elegant amenities, marble entry, and carpeting throughout. It has an optional bonus room of 1,626 square feet, giving the house a total of 7,835 square feet – 707.42 square meters.

Cost To Build:
 includes foundation, on site construction, tile, marble and carpet floors. Does not include shipping, infrastructure, cost of land, and landscaping.

FOB Vactory

**\$525,823
5 Car Garage**

*Price effective
September 15, 2009.*

UPPER LEVEL

