



HOUSE PLAN MP 7643

Low Cost House Plan

Standard Features:

Dimensions:

Width: 40 ft. 12.19 Meters.

Depth: 50 Ft. 125.24 Meters

Ridge Height: 16 Ft., 4.84 Mtrs

Total Floor Space: 2,000 Sq. Ft., 183.81 Sq. Meters.

Exterior Wall Thickness:

6 inches, Interior, 4 Inches

Ceiling Height:

Roof Pitch: 10:12

Garage: No

Floor Levels: 1

- 3 Bedrooms, 2 Full Baths
- Anodized double glazed custom windows

Remarks:

This 2,000 sq. feet, 3 bedroom, 2 bath elegantly styled house has been redesign from a 2 bedroom to a 3 bedroom 2 bath house, with an open floor plan. Windows are German antique stained glass, and Spanish clay tile roof. Facing is finished with simulated stone wall.

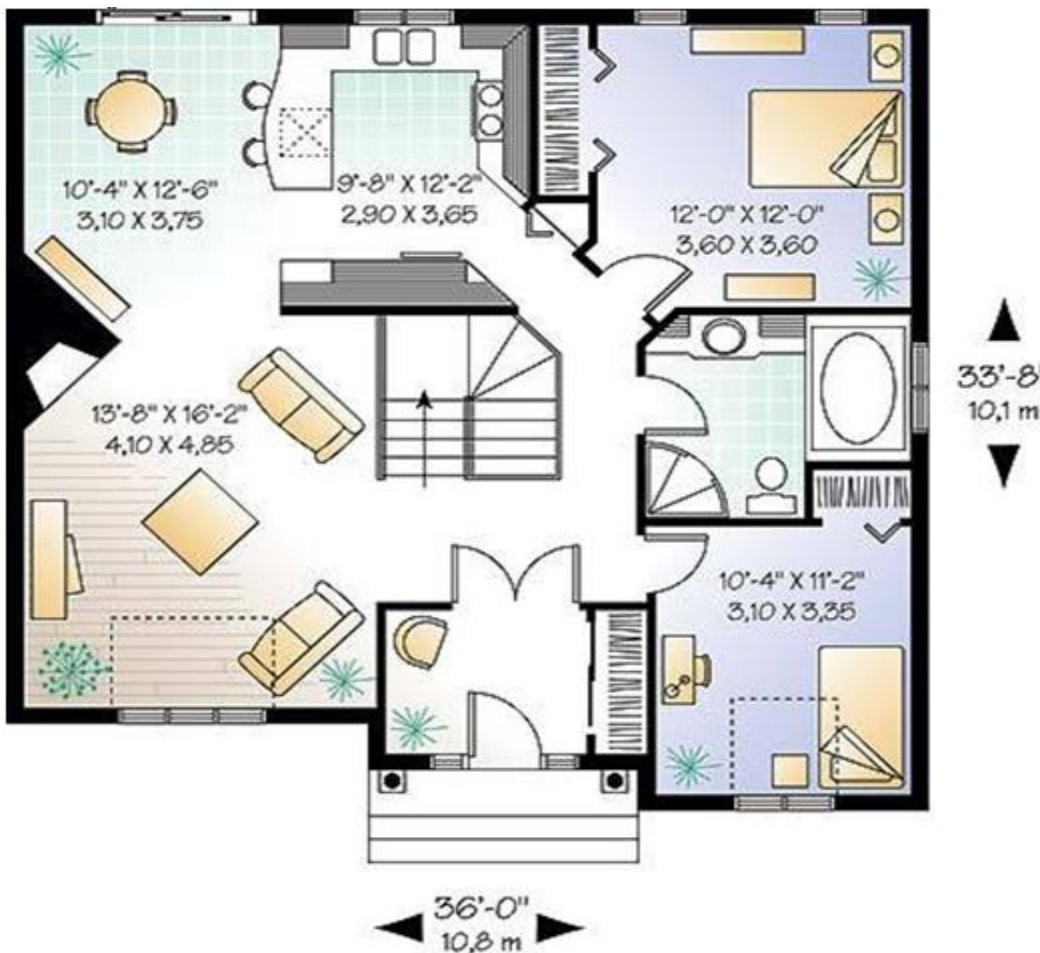
Cost To Build:

Does not Include foundation on site construction, the cost of infrastructure, floor finishing, cost of land, shipping and landscaping.

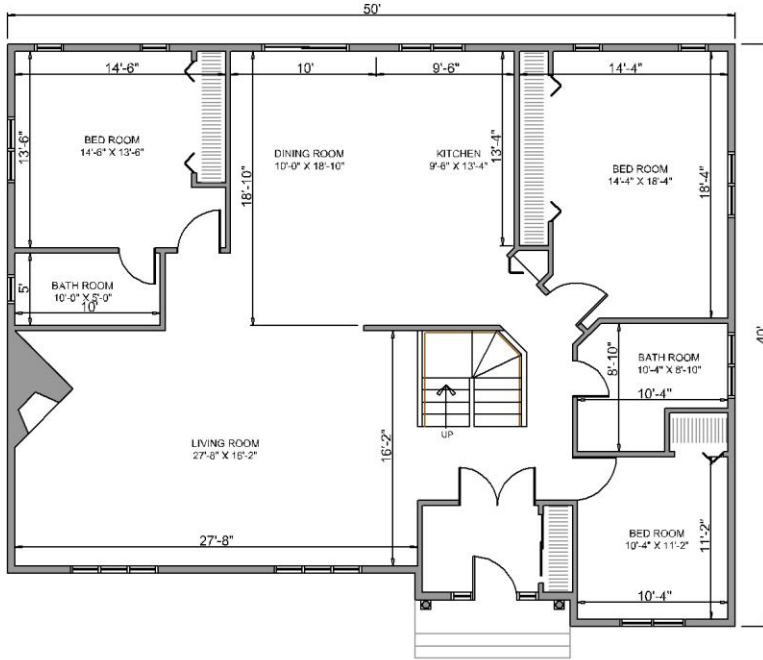
FOB Factory

\$30,260 for a 2 bedroom model

*Price effective
September 15, 2009*



OPTION - 1



GROUND FLOOR PLAN

GROUND FLOOR BUILT UP AREA - 1878 SQFT.

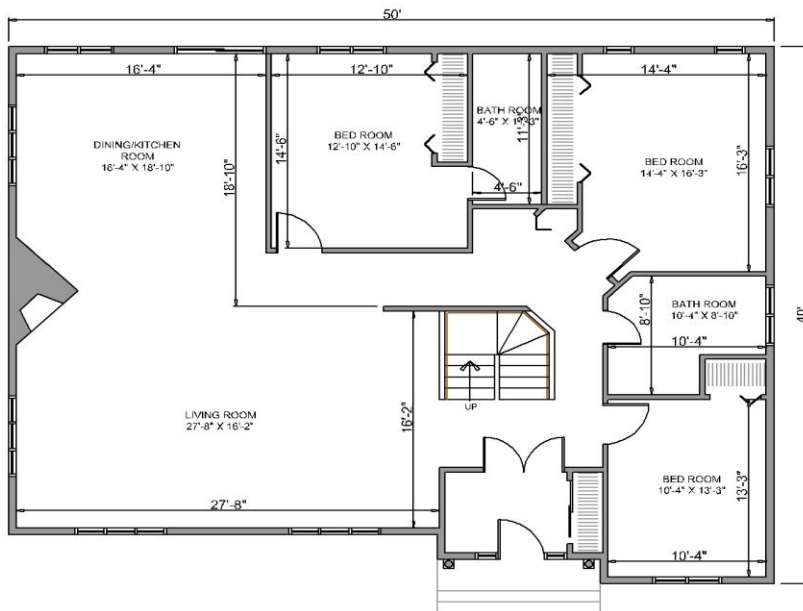


Medium Price Homes
House Plan
MP 7643.3

3 Bedroom, 2 bath home.

\$36,880 for a 3 bedroom model

OPTION - 2



GROUND FLOOR PLAN

GROUND FLOOR BUILT UP AREA - 1878 SQFT.