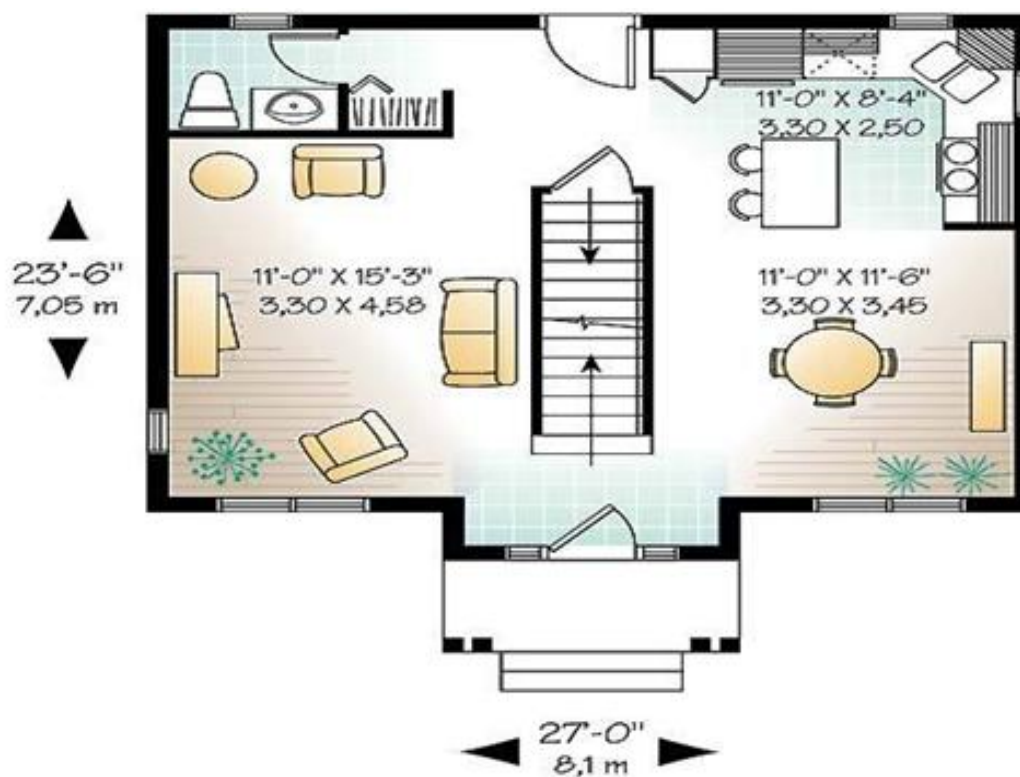




**MAIN LEAVEL FLOOR PLAN**



## HOUSE PLAN LC 6351

### Standard Features:

#### Dimensions:

**Width:** 36 ft. 10.90 Meters.

**Depth:** 44 Ft. 13.32 Meters

**Ridge Height:** 33 Ft 10.00 Mtr

**Total Floor Space:** 3,168 Sq. Ft., 287.12 Sq. Meters.

#### Exterior Wall Thickness:

6 inches, Interior, 4 Inches

**Ceiling Height:** 8 feet, 3.02

meters. **Roof Pitch:** 6:12

**Garage:** No

Floor Levels: 2

- 5 Bedrooms, 4 Baths
- Anodized double glazed custom windows

#### Remarks:

This 3,168 sq. feet, comes in 3 and 5 bedroom options, with 3 and 4 full bath option. It has been redesigned to feature a large comfortable open space on the main level, with a master suite bedroom with a sitting area and 4 bedrooms on the 2<sup>nd</sup> level. With a teen room for gaming and television. It's designed for a large family, and can be situated on a small lot

#### Cost To Build:

Does not include slab foundation, and floor covering, on site construction. Cost of land, infrastructure, shipping and landscaping.

FOB FACTORY

**\$42,260**

4 Bedroom Price

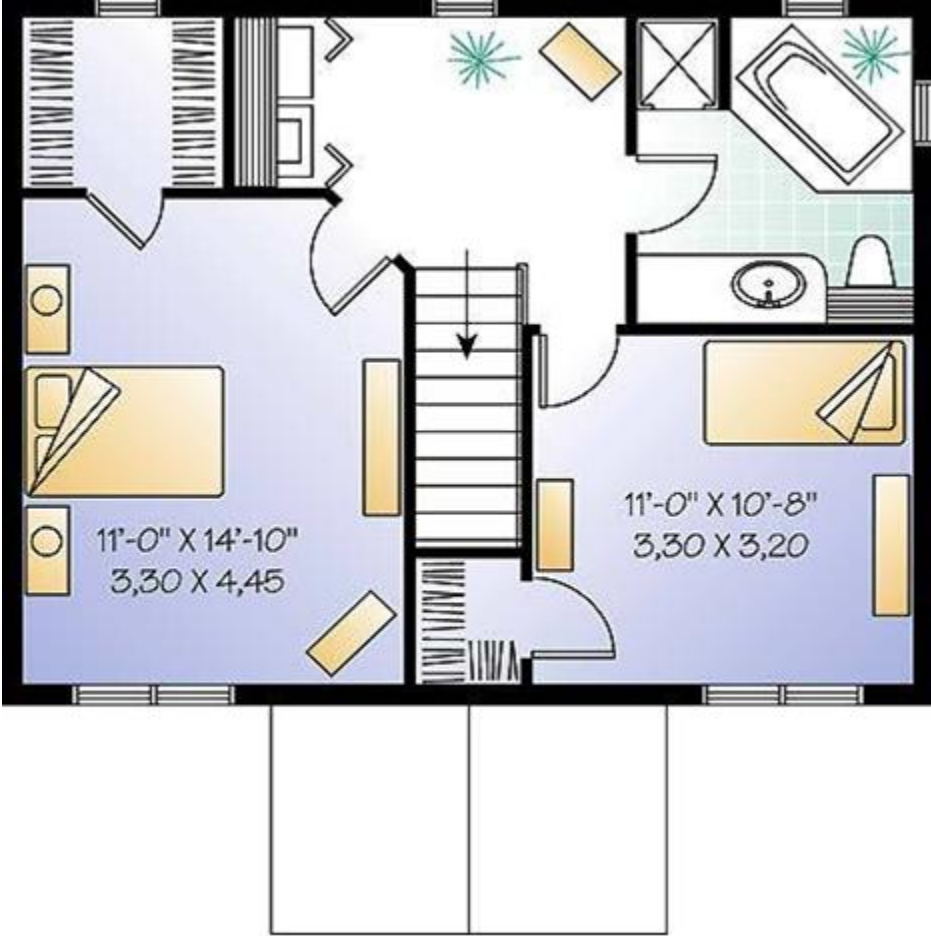
**\$48,880**

5 Bedroom Price

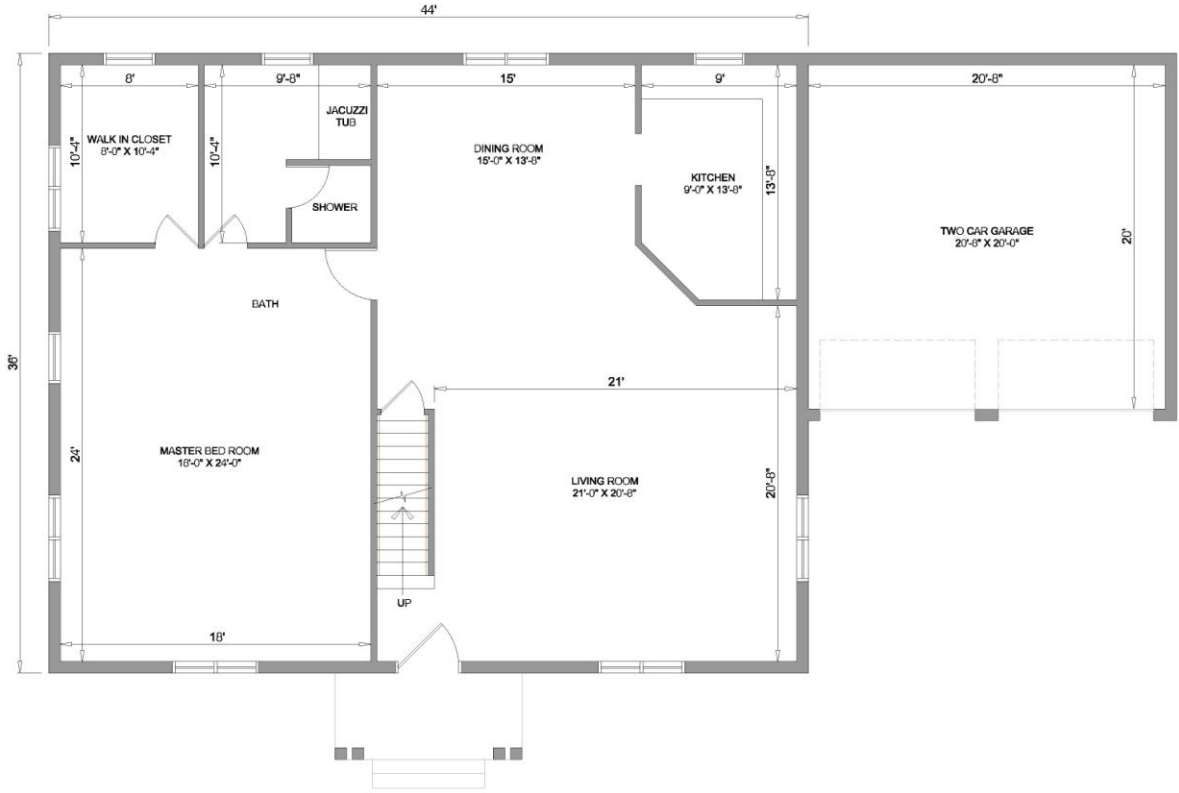
*Price effective  
September 15, 2009*

**2<sup>ND</sup> LEVEL FLOOR PLAN**

**Being redesigned for 4 bedrooms and a teen room.**



4 BEDROOM FLOOR PLANS



## GROUND FLOOR PLAN

GROUND FLOOR BUILT UP AREA - 1584 SQFT.



## FIRST FLOOR PLAN

FIRST FLOOR BUILT UP AREA - 1584 SQFT.