



HOUSE PLAN LC 4-638

Low Cost House Plan

Standard Features:

Dimensions:

Width: 50 ft. 15.13 Meters.

Depth: 40 Ft. 12.18 Meters

Ridge Height: 18 Ft., 5.45 Mtrs

Total Floor Space: 1,600 Sq. Ft., 148.64 Sq. Meters.

Exterior Wall Thickness:

6 inches, Interior, 4 Inches

Ceiling Height: 8 feet, 3.02

meters. **Roof Pitch:** 10:12

Floor Levels: 1

- 3 Bedrooms, 2 Full Baths
- Anodized double glazed custom windows

Remarks:

This 1,600 traditional design has a floor plan featuring 3 bedrooms, 2 baths, and an open living area, with a 2 car garage. There is also an option available for a 4th master suite bedroom with a large bath, for an additional cost of \$5,000.00.

Cost To Build:

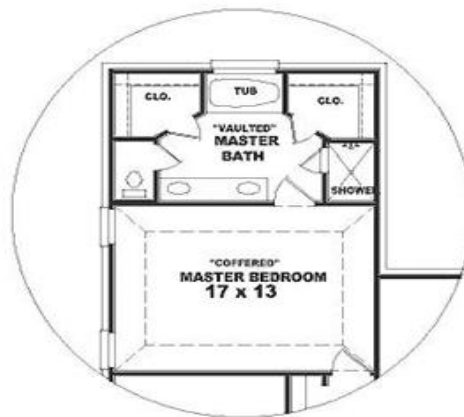
A master suite bedroom (an additional master suite bedroom of approximately 580 square feet, can be added as an option at the cost of \$5,000 add on. Price does not include foundation, on site construction, Spanish tile roof is \$2,000 extra. Infrastructure, cost of land, floor covering, shipping and landscaping not included.

FOB Factory

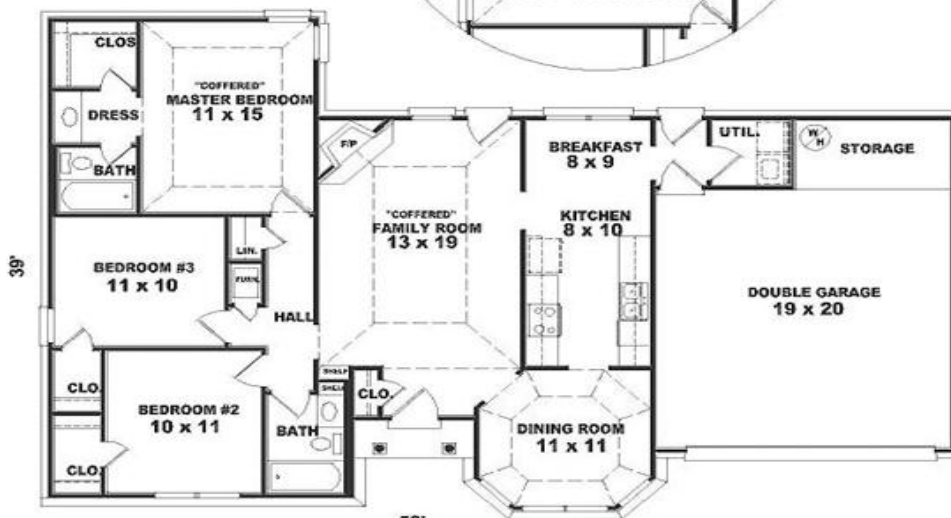
\$29,600

**\$34,600 with 4th
bedroom added**

*Price effective
September 15, 2009*



"OPTIONAL"
MASTER BATH
&
MASTER BEDROOM



FLOOR PLAN