



**HOUSE PLAN
L.C 4900-162**

Standard Features:

Dimensions:

Width: 68 ft. 20.73 Meters.
Depth: 36 Ft. 10.97 Meters
Ridge Height: 14 Ft., 4.24 Mtrs
Total Floor Space: 2,448 Sq. Ft., 227.4 Sq. Meters.

Exterior Wall Thickness:

6 inches, Interior, 4 Inches
Ceiling Height: 8 feet, 3.02 meters. **Roof Pitch:** 6:12

Garage: 1 Carport

415 Sq. Feet 37.39 Sq. Meters
 Floor Levels: 1

- 5 Bedrooms, 3 Baths
- Anodized double glazed custom windows

Remarks:

This 2,448 square feet ranch style 5 bedroom, 3 bath with a 2 car garage, has an open floor plan that is ideal for a large family, large master bedroom, split bedrooms, family room and a bonus room. Roof designed with truss construction. The floor plan is being redesigned from a 3 bedroom to a 5 bedroom house

Cost To Build:

Does not include foundation, final floor finishing, shipping, infrastructure, cost of land, and landscaping.

FOB Factory

\$32,571

3 Bedroom Plan

or

\$42,380

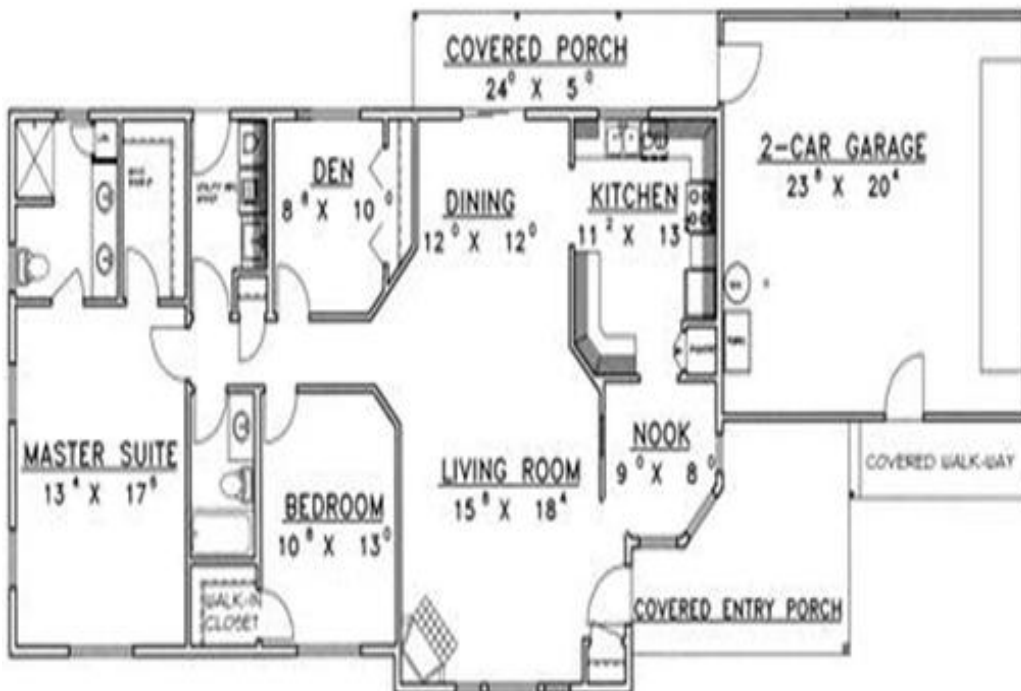
5 Bedroom Plan

Price effective

September 15, 2009

Floor Plan:

This house plan comes in two different floor plans. The 3 bedroom floor plan (2 bedrooms can be the 3rd bedroom and a five bedroom floor plan, which is not shown here. A 5 bedroom floor plan is being drawn up



FLOOR PLAN: 5 BEDROOMS

